

## Diamond Drilling to Commence at Barkly Copper-Gold Project, Northern Territory

Tennant Minerals (ASX:TMS) is commencing a 1,500m diamond drilling program at its Barkly Copper-Gold Project in the Northern Territory

- Drilling contractor, Titeline Drilling, are on-site and about to commence a 1,500m, seven diamond-drillhole, program testing the high-grade Bluebird copper-gold deposit
- The drilling will follow up previous, very high-grade, copper and gold drilling intersections from the Bluebird Prospect, including:
  - BBRC019: 15m @ 3.46% Cu, 0.61g/t Au incl 3m @ 4.24% Cu, 1.76 g/t<sup>1</sup>
  - BBDD0004: 16m @ 3.02% Cu, 0.65g/t Au incl 4m @ 6.49% Cu, 0.74g/t Au<sup>3</sup>
  - BBDD-2: 20m at 8.17g/t Au, 0.61% Cu incl 4m at 37.9g/t Au, 0.66% Cu<sup>2</sup>
- Several RC holes in 2020 did not test the entire thickness of mineralisation, and BBRC019 ended in 1m @ 3.9 g/t Au and 4.8% Cu at end of hole, with the mineralisation remaining open along strike to the west and at depth
- This drilling program will test the entire thickness of the high-grade copper-gold mineralisation, as well test for down-plunge extensions to the west and at depth
- Diamond drilling will be conducted using double-shift operations in order to ensure completion of the drilling program during this quarter

Tennant Minerals Limited (ASX:TMS) is pleased to advise that a large capacity diamond drilling rig operated by drilling contractor, Titeline Drilling, is on site and about to commence a seven (7) hole, 1,500m, diamond drilling program targeting high-grade copper-gold mineralisation at the Company's 100%-owned Barkly Project, located in the Northern Territory of Australia (see Figure 1).

The Barkly Project is located approximately 45km east of the town of Tennant Creek in the Northern Territory and is considered highly prospective for the discovery of major, high-grade, Tennant Creek style copper-gold deposits.

The Company's initial focus is the Bluebird Prospect within its Barkly Copper-Gold Project (see Figure 1), where previous drilling intersected high-grade copper-gold mineralisation at relatively shallow depth. Several of the holes in the 2020 program did not complete testing across the entire thickness of the mineralisation and the deposit remains open down plunge to the west and at depth.

This diamond drilling program will initially focus on the area of identified high-grade copper-gold mineralisation and will ensure that the high-grade zone is fully tested, including below the previous intersection in BBRC019 that **ended in 1m @ 3.9g/t Au and 4.8% Cu at end of hole** (see Figure 3). In addition, drilling will test for down plunge extensions of this very high-grade zone to the west and at depth.

\*\* This announcement is authorised by the board on behalf of the Company \*\*

TENNANT MINERALS  
LIMITED

ASX ANNOUNCEMENT

11 November 2021

### Board:

Matthew Driscoll

Non-Executive Chairman

Gino D'Anna

Non-Executive Director

Michael Scivolo

Non-Executive Director

Neville Bassett

Non-Executive Director

### Capital Structure:

465.38 million Shares

307.5 million Options  
@ \$0.03 exp 23/04/24

ASX Code: TMS

Commenting on the commencement of drilling at the Barkly Project, Chairman, Mr Matthew Driscoll stated:

*“This very important further drilling program at the Bluebird Prospect has remained a high priority for the Company, particularly following the intersection of very high-grades of copper-gold mineralisation during the 2020 RC drilling program, that included some holes that ended in high-grade mineralisation which remains open at depth.*

*“We have chosen a high-capacity diamond drilling rig and experienced contractor, to ensure that the deposit is fully tested and to allow for the deeper holes to be extended if necessary. In order to complete the program prior to Christmas, the rig will be operating around the clock.*

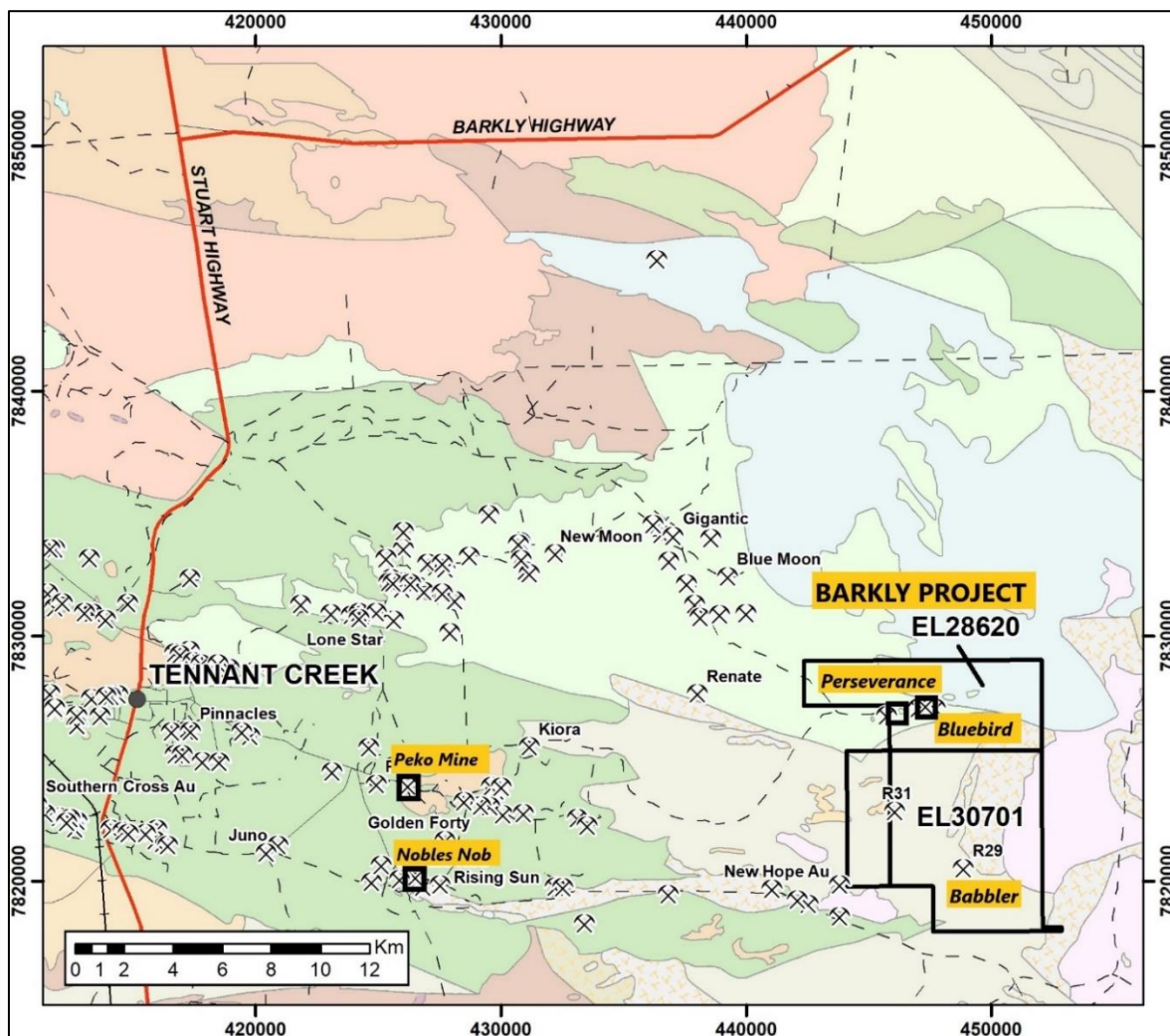
*“Our team have done a fantastic job of securing a high-quality drilling contractor during these challenging times and we look forward to updating shareholders as we progress with this drilling campaign.*

*“The Company is well funded to pursue an aggressive exploration strategy at Barkly, and the exploration team is continuing to work up drilling targets and advance this highly prospective copper-gold project towards development.”*

### ABOUT THE BARKLY GOLD-COPPER PROJECT

The Barkly Project is located approximately 45km east of the town of Tennant Creek in the Northern Territory and comprises two Exploration Licences, being EL 28620 (**Barkly Project**) and EL 30701 (**Babbler Project**) (see Figure 1).

The Barkly-Babbler Project is considered highly prospective for magnetite hosted copper-gold mineralisation, similar to other major deposits found elsewhere in the Tennant Creek Mineral Field, such as the **Peko deposit**, only 20km to the west of the Barkly project (Figure 1), that produced **147,000 tonnes of 4% Cu and 414Koz at 10 g/t Au** between 1934 and 1981.

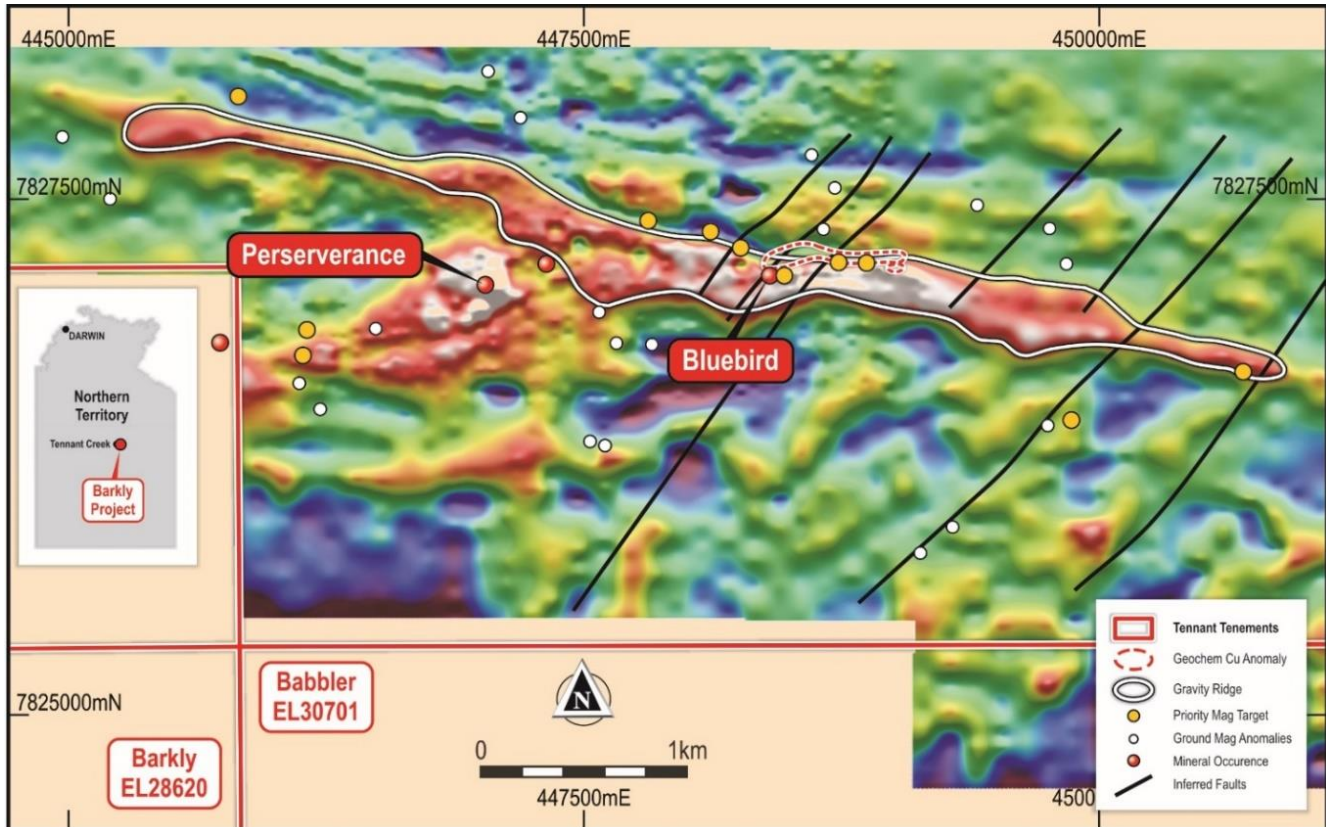


**Figure 1: Barkly Project location plan**

\*\* This announcement is authorised by the board on behalf of the Company \*\*

## ABOUT THE BARKLY PROJECT, BLUEBIRD PROSPECT

The Barkly Project includes the **Bluebird Prospect**, that is located at the centre of a prominent gravity trend and coincident aeromagnetic anomaly along an interpreted west-north-west trending fault corridor (see Figure 2, below). The “Bluebird Corridor” has been mapped for over 5km strike length and Bluebird is one of several coincident magnetic and gravity anomalies within this corridor. Previous drilling along strike from Bluebird has been limited to only shallow reconnaissance style and is unlikely to have penetrated a strongly leached zone that lies above the mineralisation identified at Bluebird. The historical Perseverance Mine is offset from the corridor but is associated with a discrete gravity - magnetic feature, that also remains un-tested at depth.



**Figure 2: Gravity ridge with Bluebird Prospect and magnetic targets**

At the surface the Bluebird prospect is marked by an ironstone unit, that forms a low hill with several shallow workings. The ironstone has only low levels of gold and copper due to strong leaching that extends to a depth of over 100m. Previous drilling in 2014<sup>3</sup> and 2020<sup>1</sup> intersected high copper and gold values associated with a supergene enriched zone at approximately 120-150m vertical depth. Based on the drilling results to date, mineralisation has been identified from 50m to at least 150m vertical depth from surface and over a strike length of more than 150m, remaining open at depth and along strike to the west.

The new diamond drilling program at the Bluebird Prospect, contracted with Titeline Drilling Pty Ltd, will comprise seven (7) diamond drillholes for a total of up to 1,500m of drilling.

The drilling program is designed to complete the testing across the central part of the Bluebird Prospect high-grade copper-gold mineralisation, as well as test the down-dip / plunge extensions of the zone (see cross section, Figure 3).

The drilling will follow up previous high-grade drilling intersections from the November 2020 RC drilling program<sup>1</sup>, when the Company undertook an initial exploration drilling campaign at the Barkly Copper Gold Project comprising seven (7) drill holes for a total of approximately 1,170m. Significant intersections from the 2020 program included:

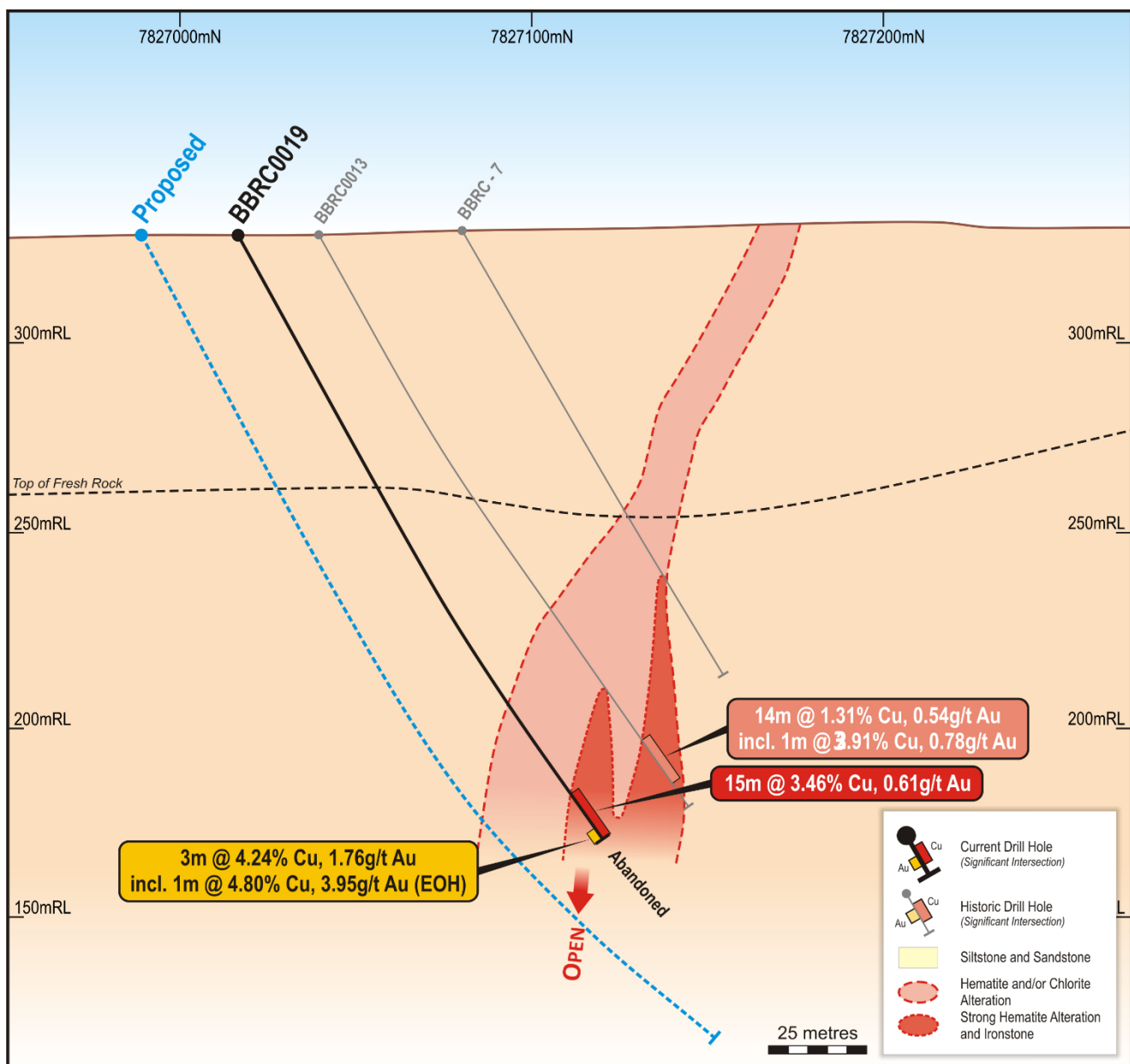
- BBRC0015** 20m @ 1.67% Cu, 1.79g/t Au from 156m, including 10m @ 2.32% Cu, 2.87 g/t Au<sup>1</sup>
- BBRC0019** 15m @ 3.46% Cu, 0.61g/t Au from 172m, including 4m @ 6.28% Cu, 0.24g/t Au from 175m, and 1m @ 4.80% Cu, 3.95g/t Au from 186 (finishing in mineralisation, Figure 3)<sup>1</sup>

\*\* This announcement is authorised by the board on behalf of the Company \*\*

The 2020 RC holes were drilled to in-fill and extend previous RC and diamond drilling completed in 2014<sup>3</sup>, that intersected high-grade copper-gold mineralisation within an ironstone unit on a west-northwest trending, steeply south dipping, fault zone and produced several very high-grade intersections, including:

- BBDD0004:** 16m at 3.02% Cu, 0.65g/t Au from 139m, incl. 4m at 6.49% Cu, 0.74g/t Au<sup>3</sup>
- BBRC0012:** 31m at 2.48% Cu, 0.21g/t Au from 116m incl. 12m at 4.41% Cu, 0.23g/t Au<sup>3</sup>
- BBDD-2:** 20m at 8.17g/t Au, 0.61% Cu from 157m incl. 4m at 37.9g/t Au, 0.66% Cu<sup>2</sup>
- BBRC-5:** 25m at 1.90% Cu, 0.28 g/t Au from 62m incl. 4m at 8.99% Cu, 1.06g/t Au<sup>2</sup>
- BBRC0013:** 14m at 1.31% Cu, 0.54g/t Au from 162m incl. 1m at 3.91% Cu, 0.78g/t Au<sup>3</sup>

Significantly, drill hole **BBRC0019**<sup>1</sup>, drilled below BBRC013, which was previously the deepest and most westerly hole drilled at Bluebird<sup>3</sup>, intersected strongly hematite altered siltstone and ironstone from 172m to 187m but was abandoned at that depth due to in-hole caving. **The hole ended in high-grade copper-gold mineralisation, with the last metre assaying 3.9 g/t Au and 4.81% Cu.** The current program will test immediately below this intersection and gain important structural information across the footwall contact of the mineralised zone (see Figure 3 below).



**Figure 3: Bluebird cross-section 448360E with previous intersections and proposed drillhole**

\*\* This announcement is authorised by the board on behalf of the Company \*\*

## REGIONAL SETTING AND PROSPECTIVITY

The Tennant Creek Copper-Gold Field is located within the central Tennant Creek Block where the oldest rocks are the Proterozoic metasedimentary rocks of the Warramunga Formation. The Warramunga Formation hosts the major iron oxide-copper-gold deposits (IOCG) and historically Tennant Creek IOCG-style mineralised systems have produced extremely high grades and supported highly profitable mines (Figure 4).

The copper-gold mineralisation at the Bluebird Prospect is hosted by an east west striking, steeply south dipping, ironstone body. The ironstone body is interpreted to be controlled by a major east-west structure associated with a regional scale gravity anomaly and a discrete magnetic feature.

Copper, gold and bismuth mineralisation at Tennant Creek is often associated with east-west striking ironstone bodies within west-northwest striking fault corridors, where they are intersected by north-east trending structures.

Major, high-grade, copper-gold deposits are located within 20km to the west of the Barkly Project and include the **Peko deposit**, that produced **147,000 tonnes of 4% Cu and 414Koz at 10 g/t Au** between 1934 and 1981 and the **Nobles Nob deposit** that produced **1.1Moz of gold** historically (see Figure 4 below).

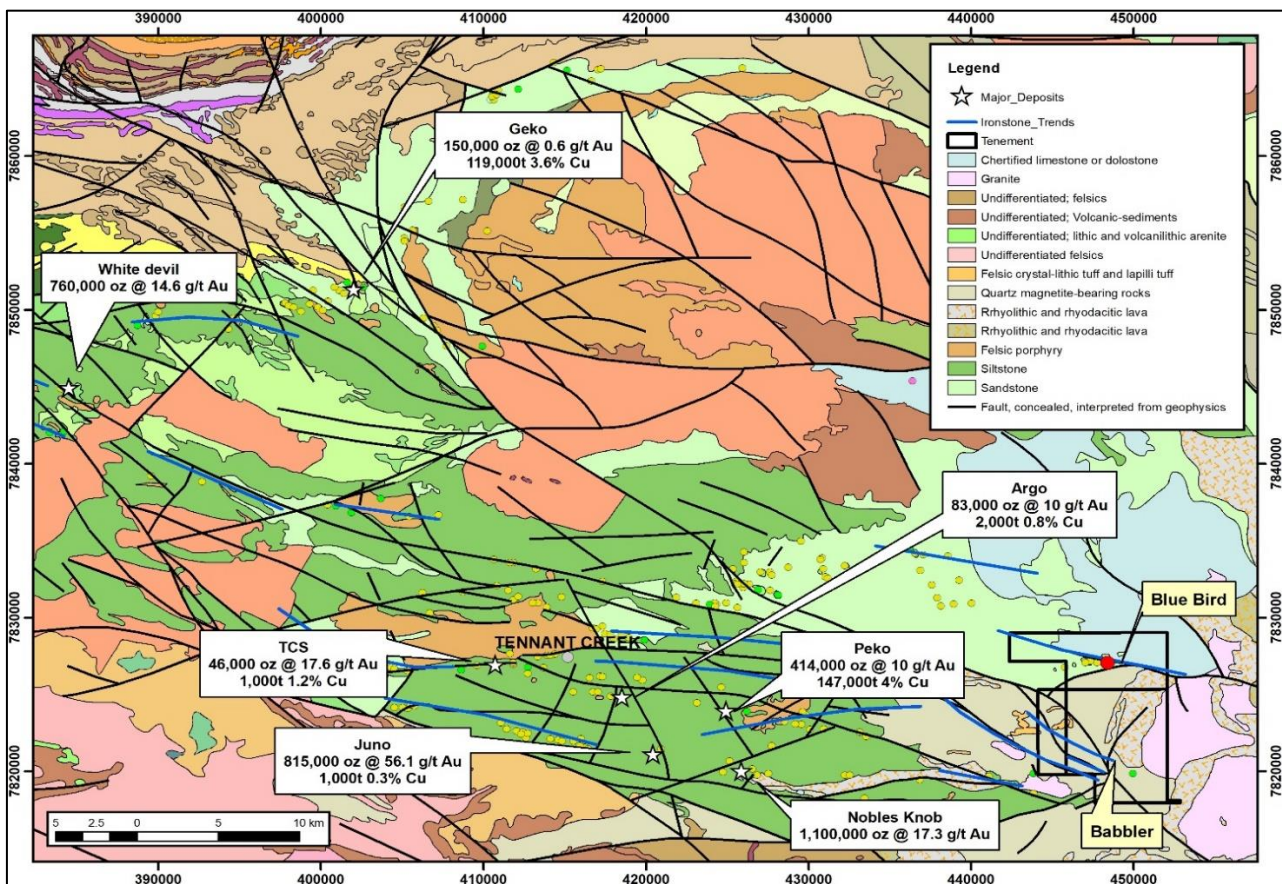


Figure 4: Geology of the Tennant Creek region showing major copper-gold deposits, occurrences and the Barkly Project

## EXPLORATION AND DEVELOPMENT STRATEGY FOR BLUEBIRD

The Company's primary objective is to complete further drilling to extend and define the high-grade copper-gold mineralisation identified at the Bluebird Prospect. Bluebird is currently the highest priority and most advanced prospect within the Barkly Project area; however, further exploration is also planned along the 5km Bluebird Corridor to test other highly prospective magnetic-gravity anomalies that have not been drilled at depth.

This current phase of drilling at Bluebird will aim to extend the copper-gold mineralisation to the west, and at depth, as well as define the high-grade zone so that Mineral Resources may be estimated.

The ultimate objective of the Company is to build a high-grade copper-gold resource base at the Barkly Project and advance the Barkly Project towards mine development.

\*\* This announcement is authorised by the board on behalf of the Company \*\*

## REFERENCES

- <sup>1</sup> 18 March 2020. Blina Minerals (ASX: BDI) “High-Grade Copper and Gold Intersected in Drilling program at Bluebird”
- <sup>2</sup> 24 September 2019. Blina Minerals (ASX: BDI) “Strategic Acquisition of High-Grade Gold-Copper Project”
- <sup>3</sup> 09 December 2014. Blaze International Ltd (ASX: BLZ) “High Grade Copper Sulphide Intersection at Bluebird”

\*\*\*ENDS\*\*\*

## CONTACT AND AUTHORISATION

This release was authorised by the Board of Tennant Minerals Ltd (ASX:TMS).

For further information please contact:

**Matthew Driscoll**  
**Non-Executive Chairman**  
**M: +61 417 041 725**

## CAUTIONARY STATEMENT REGARDING FORWARD LOOKING INFORMATION

This release contains forward-looking statements concerning Tennant Minerals. Forward-looking statements are not statements of historical fact and actual events and results may differ materially from those described in the forward-looking statements as a result of a variety of risks, uncertainties and other factors. Forward-looking statements are inherently subject to business, economic, competitive, political and social uncertainties and contingencies. Many factors could cause the Company’s actual results to differ materially from those expressed or implied in any forward-looking information provided by the Company, or on behalf of, the Company. Such factors include, among other things, risks relating to additional funding requirements, metal prices, exploration, development and operating risks, competition, production risks, regulatory restrictions, including environmental regulation and liability and potential title disputes.

Forward looking statements in this release are based on the company’s beliefs, opinions and estimates of Tennant Minerals Ltd as of the dates the forward-looking statements are made, and no obligation is assumed to update forward looking statements if these beliefs, opinions and estimates should change or to reflect other future developments.

## COMPETENT PERSON’S DECLARATION

The information in this report that relates to exploration results is based on information compiled or reviewed by Mr Nick Burn who is Exploration Manager for Tennant Minerals and a member of the Australian Institute of Geoscientists. Mr Burn has sufficient experience which is relevant to the style of mineralisation and type of deposit under consideration and to the activity which he is undertaking to qualify as a Competent Person as defined in the 2012 edition of the ‘Australasian Code of Reporting of Exploration Results, Mineral Resources and Ore Reserves’. Mr Burn consents to the inclusion in the report of the matters based on his information in the form and context in which it appears.

## ASX LISTING RULES COMPLIANCE

In preparing this announcement dated 11 November 2021, the Company has relied on the announcements previously made by the Company and specifically dated 24 September 2019 and 18 March 2020. The Company confirms that it is not aware of any new information or data that materially affects those announcements previously made, or that would materially affect the Company from relying on those announcements for the purpose of this announcement.

\*\* This announcement is authorised by the board on behalf of the Company \*\*

**APPENDIX 2**
**JORC 2012 Edition - Section 1 Sampling Techniques and Data**

(Criteria in this section apply to all succeeding sections.)

Criteria	JORC Code explanation	Commentary
<b>Sampling techniques</b>	<ul style="list-style-type: none"> <li><i>Nature and quality of sampling (eg cut channels, random chips, or specific specialised industry standard measurement tools appropriate to the minerals under investigation, such as down hole gamma sondes, or handheld XRF instruments, etc). These examples should not be taken as limiting the broad meaning of sampling.</i></li> <li><i>Include reference to measures taken to ensure sample representivity and the appropriate calibration of any measurement tools or systems used.</i></li> <li><i>Aspects of the determination of mineralisation that are Material to the Public Report.</i></li> <li><i>In cases where ‘industry standard’ work has been done this would be relatively simple (eg ‘reverse circulation drilling was used to obtain 1 m samples from which 3 kg was pulverised to produce a 30 g charge for fire assay’). In other cases more explanation may be required, such as where there is coarse gold that has inherent sampling problems. Unusual commodities or mineralisation types (eg submarine nodules) may warrant disclosure of detailed information.</i></li> </ul>	<ul style="list-style-type: none"> <li>Exploration results are based on industry best practices, including sampling, assay methods, and appropriate quality assurance quality control (QAQC) measures.</li> <li>Core samples are taken as half NQ core and sampled on nominal 1m intervals, with sampling breaks adjusted to geological boundaries where appropriate.</li> <li>Reverse Circulation (RC), 2020 program: RC drill chips were collected at 1m intervals via a cone splitter in pre-numbered calico bags. The quantity of sample was monitored by the geologist during drilling.</li> <li>RC samples of between 3-4kg were sent to the laboratory where they were pulverised to at least 85% passing 75 microns. The pulp sample is then split to produce a sample for analysis.</li> <li>Diamond drill samples submitted to the laboratory are crushed and pulverised followed by a four-acid total digest and multi-element analysis by inductively coupled plasma optical emission spectrometry (ICP-OES) and inductively coupled plasma mass spectrometry (ICP-MS). Gold and precious metal analysis are completed by a 40g fire assay collection with inductively coupled plasma optical emission spectrometry (ICP-OES) finish.</li> </ul>
<b>Drilling techniques</b>	<ul style="list-style-type: none"> <li><i>Drill type (eg core, reverse circulation, open-hole hammer, rotary air blast, auger, Bangka, sonic, etc) and details (eg core diameter, triple or standard tube, depth of diamond tails, face-sampling bit or other type, whether core is oriented and if so, by what method, etc).</i></li> </ul>	<ul style="list-style-type: none"> <li>RC drilling was conducted using a 5<sup>1</sup>/<sub>4</sub>” face sampling hammer, with holes drilled -60 degrees.</li> <li>Diamond drillholes were collared using RC and switched to NQ2 approximately 30m before the target position is intersected. All coordinates are quoted in GDA94 datum unless otherwise stated.</li> </ul>
<b>Drill sample recovery</b>	<ul style="list-style-type: none"> <li><i>Method of recording and assessing core and chip sample recoveries and results assessed.</i></li> <li><i>Measures taken to maximise sample recovery and ensure representative nature of the samples.</i></li> <li><i>Whether a relationship exists between sample recovery and grade and whether sample bias may have occurred due to preferential loss/gain of fine/coarse material.</i></li> </ul>	<ul style="list-style-type: none"> <li>RC sample recovery is monitored by the field geologist. Low sample recoveries are recorded on the drill log. The geologist is present during drilling to monitor the sample recovery process. There were no significant sample recovery issues encountered during the drilling program.</li> <li>The quality of diamond core samples is monitored by the logging of various geotechnical parameters, and logging of core recovery and competency.</li> </ul>

\*\* This announcement is authorised by the board on behalf of the Company \*\*

Criteria	JORC Code explanation	Commentary
<b>Logging</b>	<ul style="list-style-type: none"> <li>• <i>Whether core and chip samples have been geologically and geotechnically logged to a level of detail to support appropriate Mineral Resource estimation, mining studies and metallurgical studies.</i></li> <li>• <i>Whether logging is qualitative or quantitative in nature. Core (or costean, channel, etc) photography.</i></li> <li>• <i>The total length and percentage of the relevant intersections logged.</i></li> </ul>	<ul style="list-style-type: none"> <li>• All logging is completed according to industry best practice.</li> <li>• RC chips are logged at 1m intervals using a representative sample of the drill chips. Logging records include lithology, alteration, mineralisation, colour and structure.</li> <li>• Detailed diamond drillcore information on lithology, sample quality, structure, geotechnical information, alteration and mineralisation are collected in a series of detailed self-validating logging templates.</li> </ul>
<b>Sub-sampling techniques and sample preparation</b>	<ul style="list-style-type: none"> <li>• <i>If core, whether cut or sawn and whether quarter, half or all core taken.</i></li> <li>• <i>If non-core, whether riffled, tube sampled, rotary split, etc and whether sampled wet or dry.</i></li> <li>• <i>For all sample types, the nature, quality and appropriateness of the sample preparation technique.</i></li> <li>• <i>Quality control procedures adopted for all sub-sampling stages to maximise representivity of samples.</i></li> <li>• <i>Measures taken to ensure that the sampling is representative of the in situ material collected, including for instance results for field duplicate/second-half sampling.</i></li> <li>• <i>Whether sample sizes are appropriate to the grain size of the material being sampled.</i></li> </ul>	<ul style="list-style-type: none"> <li>• For all sample types, the nature, quality and appropriateness of the sample preparation technique is considered adequate as per industry best practice.</li> <li>• RC samples of 3-4kg are collected at 1m intervals using a cone splitter. The sample size is appropriate for the style of mineralisation and the grain size of the material being sampled.</li> <li>• RC samples are dried at the laboratory and then pulverised to at least 85% passing 75 microns.</li> <li>• Core is cut using an Almonte automated core cutting saw. Half core is taken for sampling.</li> </ul>
<b>Quality of assay data and laboratory tests</b>	<ul style="list-style-type: none"> <li>• <i>The nature, quality and appropriateness of the assaying and laboratory procedures used and whether the technique is considered partial or total.</i></li> <li>• <i>For geophysical tools, spectrometers, handheld XRF instruments, etc, the parameters used in determining the analysis including instrument make and model, reading times, calibrations factors applied and their derivation, etc.</i></li> <li>• <i>Nature of quality control procedures adopted (eg standards, blanks, duplicates, external laboratory checks) and whether acceptable levels of accuracy (ie lack of bias) and precision have been established.</i></li> </ul>	<ul style="list-style-type: none"> <li>• All samples were submitted to the Intertek Laboratories sample preparation facility at Alice Springs in the Northern Territory where a pulp sample is prepared. The pulp samples are then transported to Intertek in Perth Australia for analysis.</li> <li>• Pulp sample(s) were digested with a mixture of four Acids including Hydrofluoric, Nitric, Hydrochloric and Perchloric Acids for a total digest.</li> <li>• Cu, Pb, Ag, Bi, Co Ni, Sb have been determined by Inductively Coupled Plasma (ICP) Mass Spectrometry (MS-OES).</li> <li>• Gold was analysed by Fire Assay with a 25g charge and a ICP-MS finish with a 1ppb Au detection limit.</li> <li>• A Field Standard, Duplicate or Blank is inserted every 20 samples. The Laboratory inserts its own standards and blanks at random intervals, but several are inserted per batch regardless of the size of the batch.</li> </ul>
<b>Verification of sampling and assaying</b>	<ul style="list-style-type: none"> <li>• <i>The verification of significant intersections by either independent or alternative company personnel.</i></li> <li>• <i>The use of twinned holes.</i></li> <li>• <i>Documentation of primary data, data entry</i></li> </ul>	<ul style="list-style-type: none"> <li>• All significant intercepts are reviewed and confirmed by at least two senior personnel before release to the market.</li> </ul>

\*\* This announcement is authorised by the board on behalf of the Company \*\*



<b>Criteria</b>	<b>JORC Code explanation</b>	<b>Commentary</b>
	<p><i>procedures, data verification, data storage (physical and electronic) protocols.</i></p> <ul style="list-style-type: none"> <li>• <i>Discuss any adjustment to assay data.</i></li> </ul>	<ul style="list-style-type: none"> <li>• No adjustments are made to the raw assay data. Data is imported directly to Datashed in raw original format.</li> <li>• All data are validated using the QAQCR validation tool with Datashed. Visual validations are then carried out by senior staff members.</li> </ul>
<b>Location of data points</b>	<ul style="list-style-type: none"> <li>• <i>Accuracy and quality of surveys used to locate drill holes (collar and down-hole surveys), trenches, mine workings and other locations used in Mineral Resource estimation.</i></li> <li>• <i>Specification of the grid system used.</i></li> <li>• <i>Quality and adequacy of topographic control.</i></li> </ul>	<ul style="list-style-type: none"> <li>• All drill hole collars were located with a hand-held GPS with an accuracy of +/-5m. At the completion of the drilling program all holes will be surveyed by DGPS.</li> <li>• Downhole surveys were taken at 30m intervals using a Reflex single shot camera. The camera records the azimuth and dip of the hole.</li> <li>• The survey co-ordinates are GDA94 MGA Zone 53.</li> </ul>
<b>Data spacing and distribution</b>	<ul style="list-style-type: none"> <li>• <i>Data spacing for reporting of Exploration Results.</i></li> <li>• <i>Whether the data spacing and distribution is sufficient to establish the degree of geological and grade continuity appropriate for the Mineral Resource and Ore Reserve estimation procedure(s) and classifications applied.</i></li> <li>• <i>Whether sample compositing has been applied.</i></li> </ul>	<ul style="list-style-type: none"> <li>• Data spacing and distribution used to determine geological continuity is dependent on the deposit type and style under consideration. Where a mineral resource is estimated, the appropriate data spacing and density is decided and reported by the competent person.</li> <li>• For mineral resource estimations, grades are estimated on composited assay data. The composite length is chosen based on the statistical average, usually 1m. Sample compositing is never applied to interval calculations reported to market. A sample length weighted interval is calculated as per industry best practice.</li> </ul>
<b>Orientation of data in relation to geological structure</b>	<ul style="list-style-type: none"> <li>• <i>Whether the orientation of sampling achieves unbiased sampling of possible structures and the extent to which this is known, considering the deposit type.</i></li> <li>• <i>If the relationship between the drilling orientation and the orientation of key mineralised structures is considered to have introduced a sampling bias, this should be assessed and reported if material.</i></li> </ul>	<ul style="list-style-type: none"> <li>• Orientation of sampling is as unbiased as possible based on the dominating mineralised structures and interpretation of the deposit geometry.</li> <li>• If structure and geometry is not well understood, sampling is orientated to be perpendicular to the general strike of stratigraphy and/or regional structure.</li> </ul>
<b>Sample security</b>	<ul style="list-style-type: none"> <li>• <i>The measures taken to ensure sample security.</i></li> </ul>	<ul style="list-style-type: none"> <li>• All samples remain in the custody of company geologists and are fully supervised from point of field collection to laboratory drop-off.</li> </ul>
<b>Audits or reviews</b>	<ul style="list-style-type: none"> <li>• <i>The results of any audits or reviews of sampling techniques and data.</i></li> </ul>	<ul style="list-style-type: none"> <li>• None yet undertaken for this dataset</li> </ul>

\*\* This announcement is authorised by the board on behalf of the Company \*\*

**JORC 2012 Edition - Section 2 Reporting of Exploration Results**

(Criteria listed in the preceding section also apply to this section.)

<b>Criteria</b>	<b>JORC Code explanation</b>	<b>Commentary</b>
<b>Mineral tenement and land tenure status</b>	<ul style="list-style-type: none"> <li>Type, reference name/number, location and ownership including agreements or material issues with third parties such as joint ventures, partnerships, overriding royalties, native title interests, historical sites, wilderness or national park and environmental settings.</li> <li>The security of the tenure held at the time of reporting along with any known impediments to obtaining a licence to operate in the area.</li> </ul>	<ul style="list-style-type: none"> <li>The Company controls two contiguous Exploration Licences, EL 28620 and EL30701 located east of Tennant Creek. All tenure is in good standing at the time of reporting. There are no known impediments with respect to obtaining a licence to operate in the area.</li> </ul>
<b>Exploration done by other parties</b>	<ul style="list-style-type: none"> <li>Acknowledgment and appraisal of exploration by other parties.</li> </ul>	<ul style="list-style-type: none"> <li>Several other parties have undertaken exploration in the area between the 1930s through to the present day including Posgold, Meteoric Resources and Blaze Resources.</li> </ul>
<b>Geology</b>	<ul style="list-style-type: none"> <li>Deposit type, geological setting and style of mineralisation.</li> </ul>	<ul style="list-style-type: none"> <li>The Barkly Project covers sediments of the Lower Proterozoic Warramunga Group that hosts all of the copper-gold mines and prospects in the Tennant Creek region. At the Bluebird prospect copper-gold mineralisation is hosted by an ironstone unit within a west north west striking fault. The ironstone cross cuts the sedimentary sequence that mostly comprises of siltstone.</li> </ul>
<b>Drill hole Information</b>	<ul style="list-style-type: none"> <li>A summary of all information material to the understanding of the exploration results including a tabulation of the following information for all Material drill holes: <ul style="list-style-type: none"> <li>easting and northing of the drill hole collar</li> <li>elevation or RL (Reduced Level – elevation above sea level in metres) of the drill hole collar</li> <li>dip and azimuth of the hole</li> <li>down hole length and interception depth</li> <li>hole length.</li> </ul> </li> <li>If the exclusion of this information is justified on the basis that the information is not Material and this exclusion does not detract from the understanding of the report, the Competent Person should clearly explain why this is the case.</li> </ul>	<ul style="list-style-type: none"> <li>For drilling details of the 2020 RC drilling program refer to Appendix 1 of the ASX announcement of 18 March 2020 by Blina Minerals (ASX: BDI): “High-Grade Copper and Gold Intersected in Drilling program at Bluebird”</li> <li>For drilling details of the 2014 Diamond and RC programs refer to Appendix 1 of the ASX announcement of 24 September 2019 by Blina Minerals (ASX: BDI): “Strategic Acquisition of High-Grade Gold-Copper Project”.</li> </ul>
<b>Data aggregation methods</b>	<ul style="list-style-type: none"> <li>In reporting Exploration Results, weighting averaging techniques, maximum and/or minimum grade truncations (eg cutting of high grades) and cut-off grades are usually Material and should be stated.</li> <li>Where aggregate intercepts incorporate short lengths of high grade results and longer lengths of low grade results, the procedure used for such aggregation should be stated and some typical examples of such aggregations should be shown in detail.</li> <li>The assumptions used for any reporting of metal equivalent values should be clearly stated.</li> </ul>	<ul style="list-style-type: none"> <li>All exploration results are reported by a length weighted average. This ensures that short lengths of high-grade material receive less weighting than longer lengths of low-grade material.</li> <li>No high-grade cut-offs are applied. A nominal low-grade cut-off of 0.25g/t Au and 0.3% Cu is used with a maximum of 1m of internal dilution.</li> </ul>

\*\* This announcement is authorised by the board on behalf of the Company \*\*

<b>Criteria</b>	<b>JORC Code explanation</b>	<b>Commentary</b>
<b>Relationship between mineralisation widths and intercept lengths</b>	<ul style="list-style-type: none"> <li>• <i>These relationships are particularly important in the reporting of Exploration Results.</i></li> <li>• <i>If the geometry of the mineralisation with respect to the drill hole angle is known, its nature should be reported.</i></li> <li>• <i>If it is not known and only the down hole lengths are reported, there should be a clear statement to this effect (eg ‘down hole length, true width not known’).</i></li> </ul>	<ul style="list-style-type: none"> <li>• Mineralisation at Bluebird is interpreted to be striking east-west true azimuth with a dip of 70-80 degrees towards 180 degrees true azimuth.</li> <li>• All holes are drilled as perpendicular as practical to the orientation of the mineralised unit and structure. Intersection lengths are interpreted to be close to true thickness.</li> </ul>
<b>Diagrams</b>	<ul style="list-style-type: none"> <li>• <i>Appropriate maps and sections (with scales) and tabulations of intercepts should be included for any significant discovery being reported These should include, but not be limited to a plan view of drill hole collar locations and appropriate sectional views.</i></li> </ul>	<ul style="list-style-type: none"> <li>• Refer to Figures 1, 2 and 3 of the ASX announcement.</li> </ul>
<b>Balanced reporting</b>	<ul style="list-style-type: none"> <li>• <i>Where comprehensive reporting of all Exploration Results is not practicable, representative reporting of both low and high grades and/or widths should be practiced to avoid misleading reporting of Exploration Results.</i></li> </ul>	<ul style="list-style-type: none"> <li>• All background information is discussed in the announcement. Full drill results for copper and gold assays are shown in Appendix 2 of the ASX announcement of 18 March 2020, “High-Grade Copper and Gold Intersected in Drilling program at Bluebird”.</li> </ul>
<b>Other substantive exploration data</b>	<ul style="list-style-type: none"> <li>• <i>Other exploration data, if meaningful and material, should be reported including (but not limited to): geological observations; geophysical survey results; geochemical survey results; bulk samples – size and method of treatment; metallurgical test results; bulk density, groundwater, geotechnical and rock characteristics; potential deleterious or contaminating substances.</i></li> </ul>	<ul style="list-style-type: none"> <li>• No other data is material to this report.</li> </ul>
<b>Further work</b>	<ul style="list-style-type: none"> <li>• <i>The nature and scale of planned further work (eg tests for lateral extensions or depth extensions or large-scale step-out drilling).</i></li> <li>• <i>Diagrams clearly highlighting the areas of possible extensions, including the main geological interpretations and future drilling areas, provided this information is not commercially sensitive.</i></li> </ul>	<ul style="list-style-type: none"> <li>• Additional drilling is planned to complete holes abandoned because of cavings and to extend mineralisation along strike and in particular to the west from BBRC019.</li> </ul>

\*\* This announcement is authorised by the board on behalf of the Company \*\*